

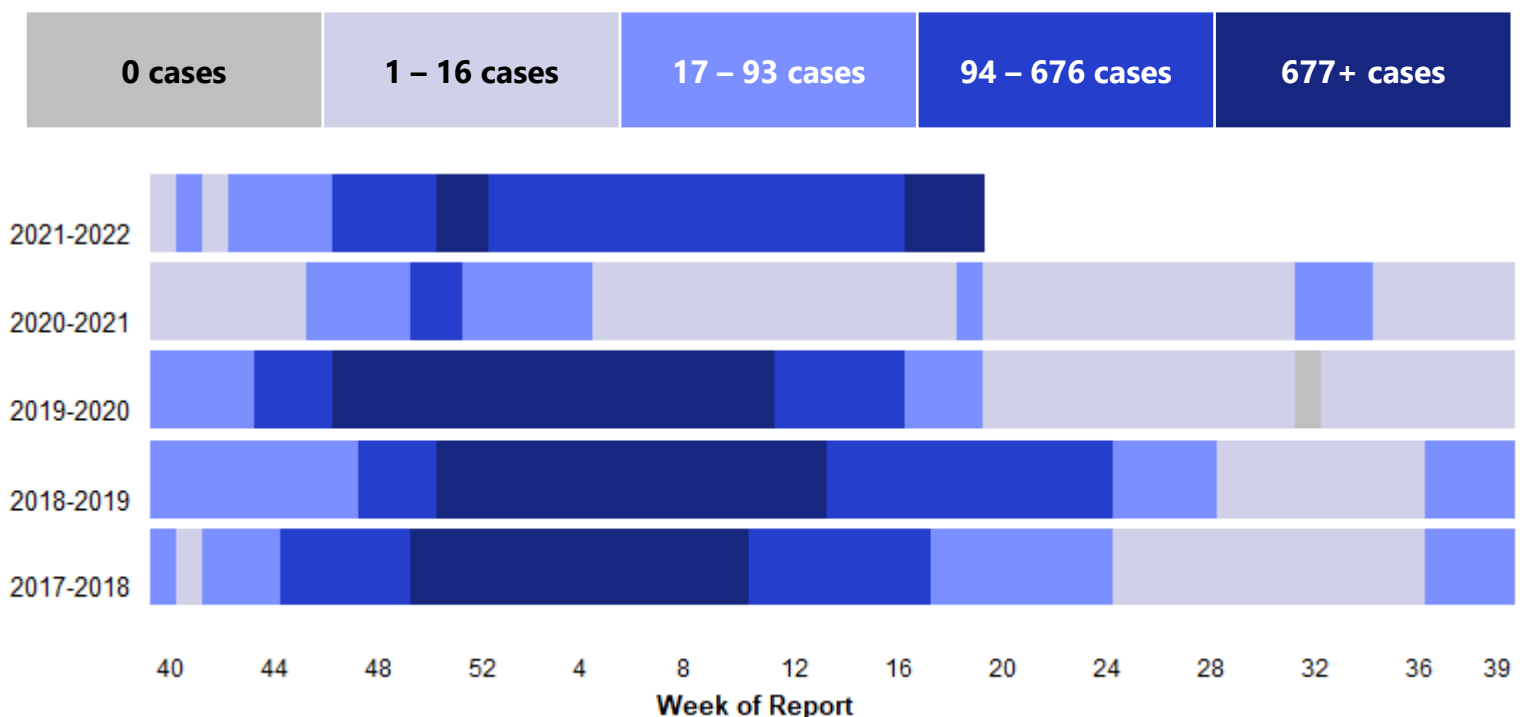
2021–2022 Influenza Season (10/03/2021 – 10/01/2022)

Please see the [interactive influenza dashboard](#) for more details on current and past seasons in Arizona.

Influenza & RSV synopsis

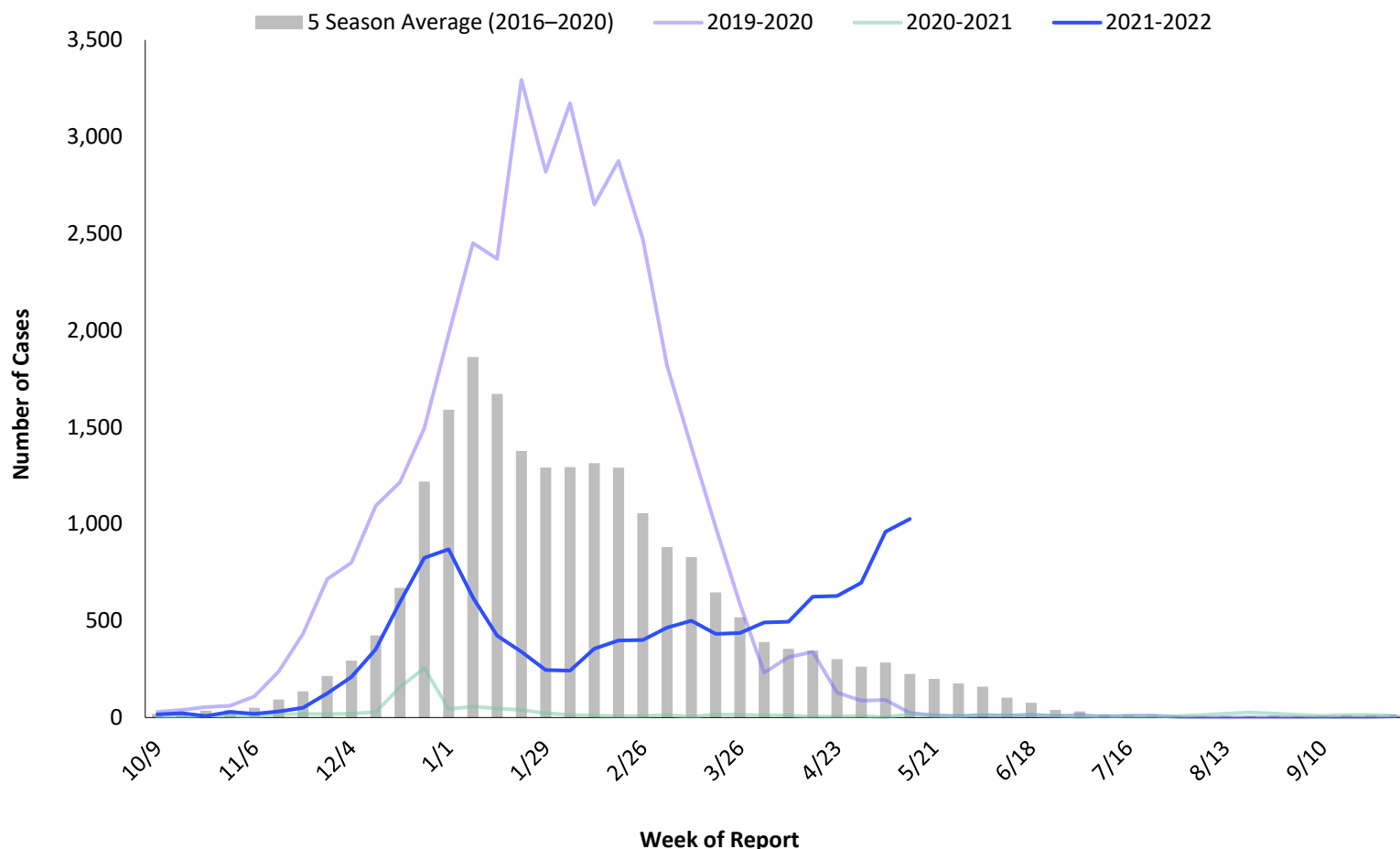
- Influenza activity is increasing.
- To receive weekly updates, subscribe to the Flu & RSV report at [azhealth.gov/email](mailto:azhealth.gov@email).
- The cases included in this report represent a small proportion of the true number of cases of influenza. Many people do not visit the doctor when ill and doctors should not be expected to run tests on all patients exhibiting influenza-like symptoms.

Arizona Influenza Intensity Levels



Laboratory-Confirmed Influenza Activity by Season

In the past week, there were **1,026 laboratory confirmed** influenza cases.



Number of Lab-Confirmed Influenza Cases Reported, by Week of Report: 2016–2022

Table 1: Reported Laboratory-Confirmed Influenza Cases Compared to Past Weeks and Seasons

	Cumulative Season Total	Current Week Total
2021–2022	12,932	1,026
2020–2021	960	18
5 season average	21,051	225
% increase, compared to 2020–2021 season	1247%	5600%
% increase, compared to a typical influenza season	-39%	355%
% increase, compared to last week	9%	7%

Laboratory-Confirmed RSV Activity by Season

In the past week, there were **20 laboratory confirmed RSV cases**.

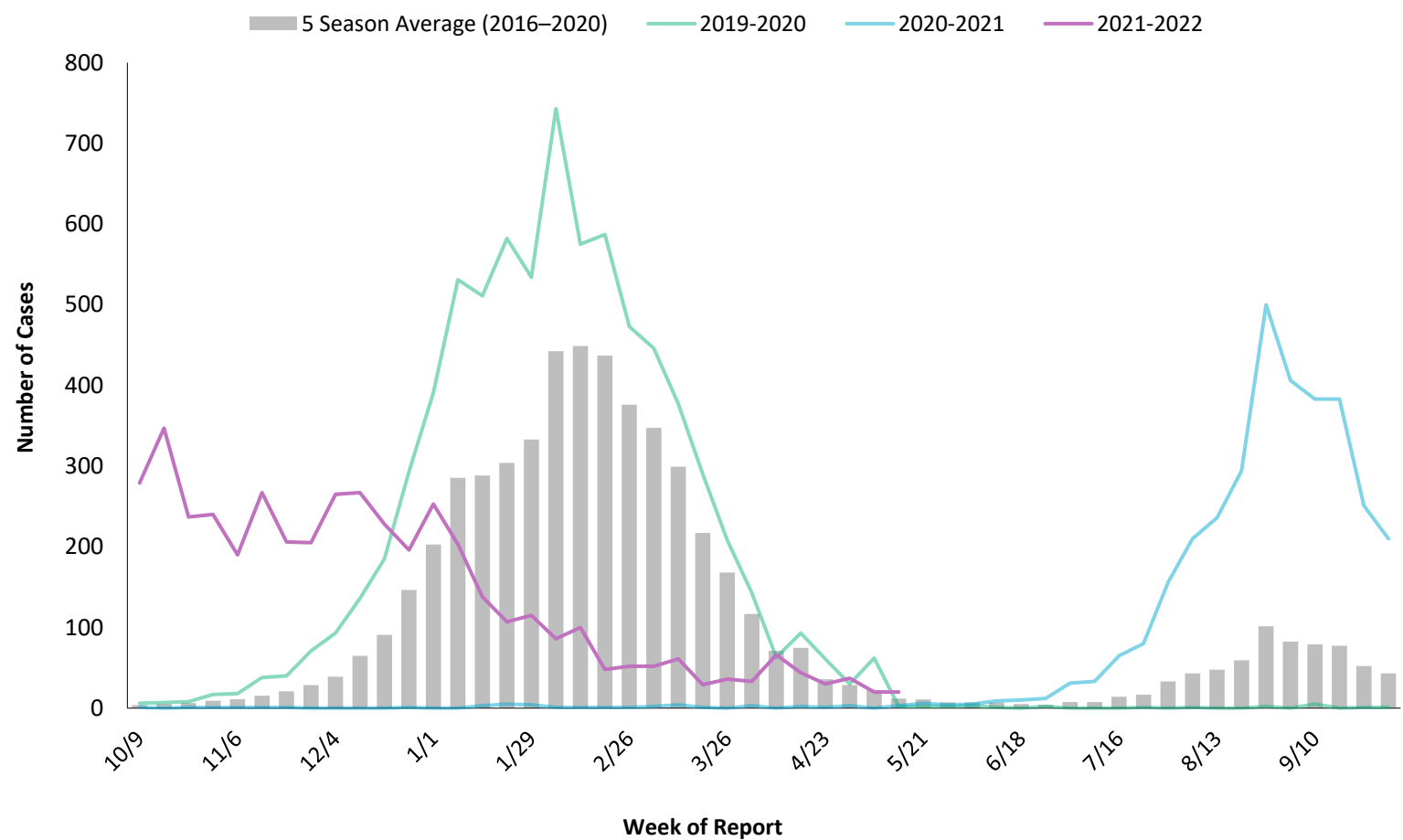


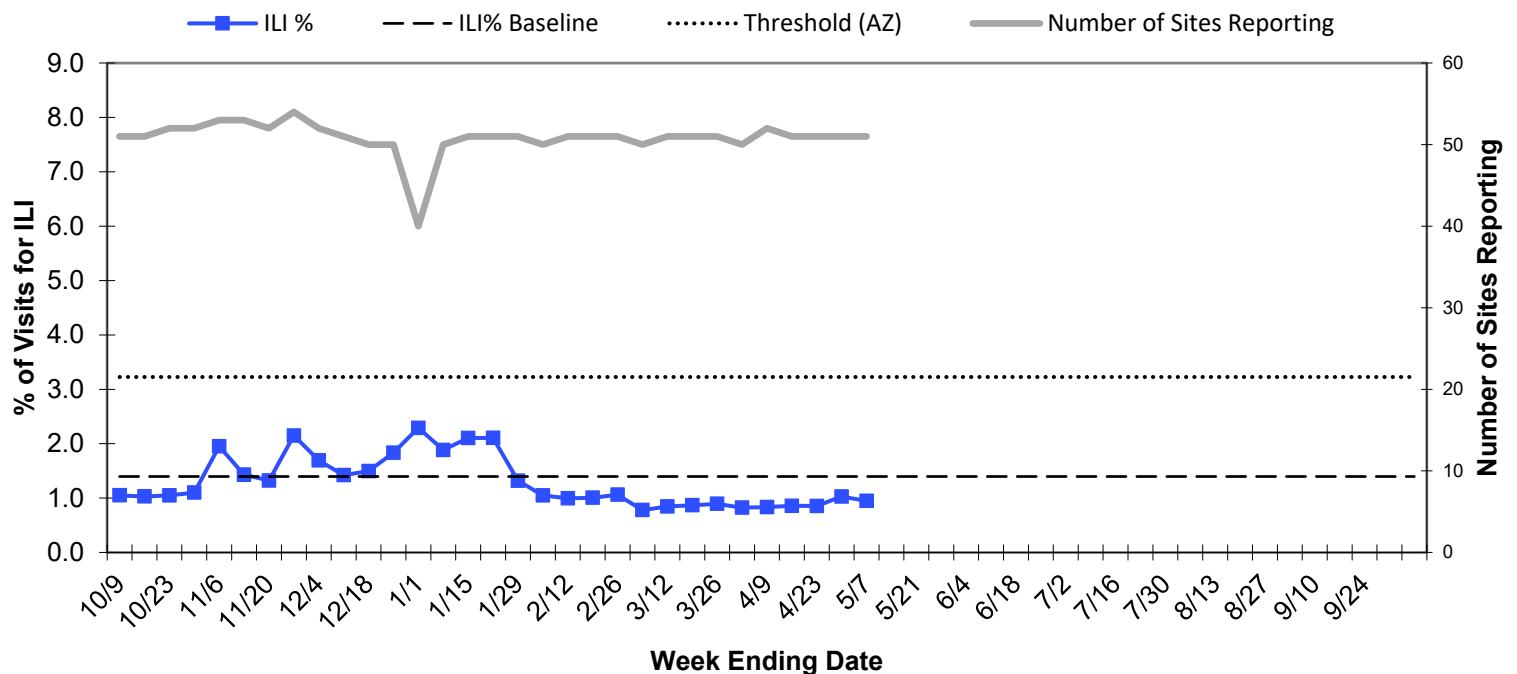
Table 2: Reported Laboratory-Confirmed RSV Cases Compared to Past Weeks and Seasons

	Cumulative Season Total	Current Week Total
2021–2022	4,457	20
2020–2021	43	3
5 season average	4,953	12
% increase, compared to 2020–2021 season	10265%	19700%
% increase, compared to a typical season	-10%	67%

Influenza-Like Illness (ILI) Surveillance from Sentinel Outpatient Providers

ILI percent was below the baseline at **0.9%** in week 18.

Percentage of Visits for ILI at Sentinel Providers, 2021-2022, Arizona



*Note: The baseline is defined as the mean of the state ILI% in weeks in the 2017–2020 influenza seasons in which two or more consecutive weeks each accounted for less than 2% of the season’s total number of specimens testing positive for influenza at the Arizona State Public Health Laboratory. The epidemic threshold is defined as the mean plus two standard deviations.

About the Data:

2021–2022 Influenza Season: The season is defined by surveillance weeks. The first day of the 2021–2022 influenza season was October 3, 2021, or week 40 and the 2021–2022 surveillance season will continue through October 1, 2022, or week 39.

Intensity Levels: Indicator of the intensity of flu activity in Arizona. The current season weekly case counts are classified into ranges that are calculated based on the average of the 4 previous season’s data (2017-2021).

Influenza-associated Pediatric Deaths: Influenza-associated pediatric deaths are reportable to the public health departments in Arizona. The 2008–2009 and 2009–2010 seasons showed an increase in influenza-associated deaths in children related to the circulation of the 2009 H1N1 strain. Zero to five deaths were reported in each of the other seasons since 2004.

Influenza-like illness: Defined as a fever of at least 100°F plus either a cough or a sore throat. In weeks when a relatively low number of enrolled facilities report data, the ILI proportion may not be as representative of Arizona activity as for other weeks. The state ILI baseline is 1.4% and the epidemic threshold is 3.2%*.