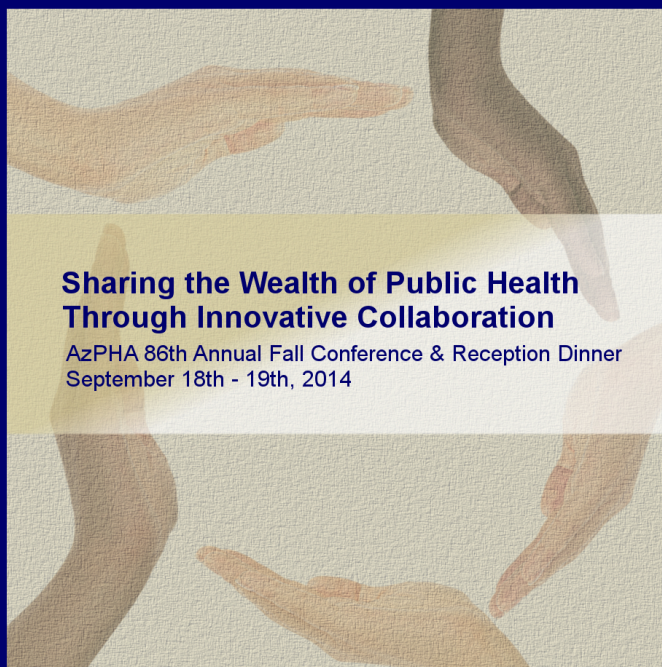


# Sharing the Wealth of Public Health Through Innovative Collaboration



September 19, 2014

AzPHA 86<sup>th</sup> Annual Fall Conference &  
Reception Dinner



## Inside

Sponsors.....	3
Goals.....	4
Speaker Bios.....	5-10
Agenda.....	11
Break Sessions.....	12
Poster Presenters.....	13
AzPHA Board.....	14
Award Winners.....	15-17
Thank You.....	18
Attendees.....	19

Dear attendees,

Thank you so much for being here and for your support of the Arizona Public Health Association (AzPHA). This conference would not have been possible without our Fall Conference Planning Committee, the support of all of our wonderful sponsors and exhibitors, the esteemed presenters joining us and of course, you. We are excited about our theme: “Sharing the Wealth of Public Health through Innovative Collaboration” and hope that you walk away from today’s conference feeling engaged and inspired to create non-traditional partnerships in your community.

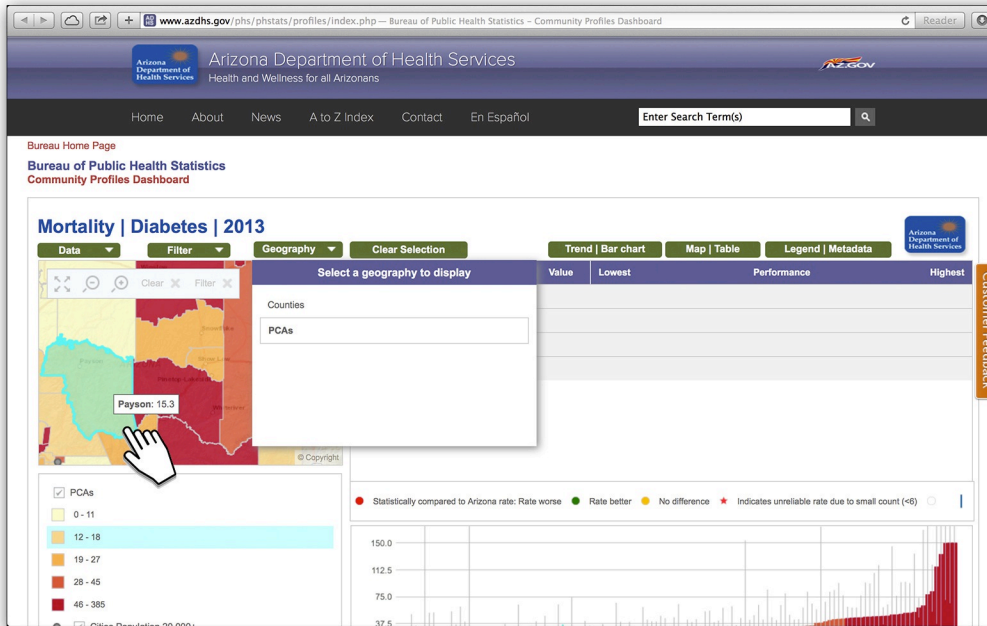
If you are new to AzPHA, we invite you to take a look at our website, [www.azpha.org](http://www.azpha.org), become a member and lend your voice. There is much work to be done and we need you.

Many thanks,

Daniella V. Yaloz



# Community Profiles Dashboard



*The new online tool will help you zero in on key indicators related to your mission and drill down to the community level to determine where to focus your resources.*

**An innovative way to access health data, including several options for looking at the state, from county level data to data by Primary Care Areas (PCA). PCAs represent Arizona's communities and describe where people go to obtain health care.**

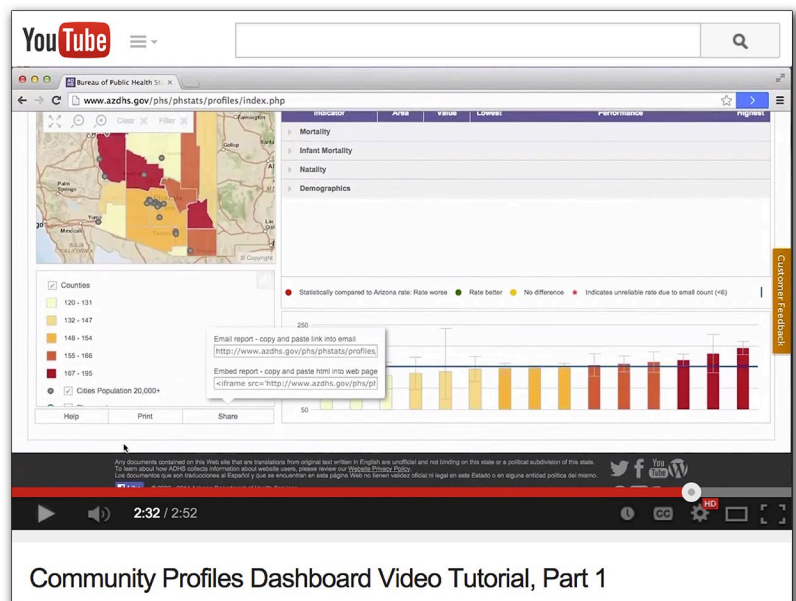
## Video Tutorials

You can learn how to use the new Community Profiles Dashboard by visiting the Arizona Department of Health Services YouTube Channel.

The video tutorials will teach you the basics of navigating the tool and how to customize the data to your needs.

You can find the tutorials online at

[www.youtube.com/azdhs](http://www.youtube.com/azdhs)



**Learn more about the Community Profiles Dashboard on the Arizona Department of Health Services website.**

[www.azhealth.gov](http://www.azhealth.gov)

AzPHA Would Like to Thank All of Our Sponsors

# Gold



# Silver



**FIRST THINGS FIRST**  
*Ready for School. Set for Life.*



**COMMUNITY  
PARTNERSHIP**  
*of Southern Arizona*

# Bronze

St. Luke's Health Initiatives  
Optum  
El Rio Community Health  
Center

## Exhibitors

Arizona Department of Health Services  
Arizona Office of Problem Gambling  
A.T. Still University  
Care1st Health Plan Arizona, Inc.  
Central Arizona College  
Community Partnership of Southern Arizona  
Empowerment Systems, Inc. – Greater Valley AHEC  
First Things First  
Saguaro Evaluation  
Southwest Human Development  
St. Luke's Health Initiative  
University of Arizona  
Maricopa County Department of Public Health

## Sustaining Members

Arizona Department of Health Services  
Empowerment Systems, Inc. – Greater Valley  
AHEC  
Maricopa County Department of Public Health

# Conference Goals

- 1.) Provide attendees with real-world examples of how non-traditional partnerships have enhanced public health efforts in rural and urban areas
- 2.) Provide education about Arizona Department of Health Services efforts to develop a State Health Improvement Plan and pursue accreditation
- 3.) Review a case study about public health collaboration to develop a prevention trust fund in the state of MA
- 4.) Learn about the current events and collaborations in the implementation of the ACA
- 5.) Offer opportunities to learn about collaboration in environmental health initiatives
- 6.) Explore collaboration in innovative mental health programs, oral health programs, and substance abuse prevention

Sharing the Wealth of Public Health through Innovative Collaboration will engage public health professionals from many disciplines to explore how they have engaged partners for positive outcomes. Three learning tracks offer participants the opportunity to explore collaboration across a variety of settings from the rural, urban and state perspective.



## Do you **GV-A-HEC?** WE DO!

The Greater Valley Area Health Education Center focuses on increasing health professionals in our community. If you are looking for a way to give back as a health professional, are looking for a new career, or needing to improve your skills in the health career you are currently in, check us out. We are here to help with your health profession needs.



[www.gvahec.org](http://www.gvahec.org)

For more info call (480)288-8260 or email: [info@gvahec.org](mailto:info@gvahec.org)



## Providing high-quality comprehensive primary care for more than 40 years

- Medical
- OB/GYN
- Pharmacy
- Dental
- Midwifery
- Radiology
- Pediatric
- Birth Center
- Mammography
- Clinical Pharmacists
- Behavioral Health
- Laboratory

*...and many other additional services.*

**Accepting all major commercial medical insurance, AHCCCS, Medicare, TriCare and Sliding Fee Scale**

For more information, please call (520) 670-3909  
or take a tour by calling (520) 205-4947

Your HEALTH  
is our PASSION

[elrio.org](http://elrio.org)

# Speaker Bios



Lina Austin

As Executive Director of the Future Forward Foundation, Inc.[3F] based in Florence, AZ, Lina Austin administers the “Seed the Future” backyard gardening project which began in February, 2012. Believing that gardens right outside your back door are more likely to be tended, replanted and shared, 3F is approaching completion of 30 gardens in Florence & Coolidge. With two recent grants they will also add 15 new gardens in Eastern Pinal County from Superior to Oracle, an area of real poverty and very few food options. After the first 10 gardens were planted in Florence by 3F, local residents were inspired to start at least five additional gardens. Gardeners participating in “Seed the Future” agree to return 30% of the produce to feed the poor. Three food banks, senior centers, Meals on Wheels and Head Start are recipients of this local, healthy produce. 3F has credentials to run a SNAP approved Farmer’s Market in the future. Historically, Eastern Pinal County used to be the Breadbasket of AZ, now most of this area is considered a USDA food desert. 3F strives to offer the residents living in food deserts an opportunity to produce a variety of crops locally. Many collaborating partners make this project a success. Lina Austin is Past President of the Heard Museum Guild, a Lifetime Member of the Pinal County Historical Society, the Sunnyslope Historical Society and Native Seeds/SEARCH. Lina is also an active member of the 107 year old Florence Woman’s Club and the AZ Association for Economic Development. She is former Executive Director of the Greater Florence Chamber of Commerce and a business owner in Florence, AZ.



Cheryl Bartlett, RN

Cheryl Bartlett, RN was named Commissioner of the Massachusetts Department of Public Health in June 2013. As Commissioner Ms. Bartlett chairs the newly appointed Prevention and Wellness Advisory Board, which oversees a \$60 million Prevention Trust Fund – the first of its kind in the nation. Ms. Bartlett leads the Department’s implementation of the health care cost containment legislation, Chapter 224, and spearheaded a number of other health care quality improvement initiatives. Most recently she was responsible for development and implementation of regulations to support the use of medical marijuana. Ms. Bartlett is chair of the Massachusetts Comprehensive Cancer Advisory Committee and is a member of the Governor’s Food Policy Council. In her role as a leader in cancer prevention and control Ms. Bartlett has supported the efforts of the Pat Cronin Foundation promoting ovarian cancer awareness and education for women across the Commonwealth.



Al Brown

Al Brown received his Bachelor of Science in Zoology and Master of Public Administration from Arizona State University. He began working at Pinal County Health Department in 1976 as an Environmental Health Specialist. In 1977 he took the position of Food Protection Section Manager at the Arizona Department of Health Services. In 1986 he moved over to Arizona Department of Environmental Quality and held many positions there during his tenure. He has also worked at Maricopa County Environmental Services Department as the Director. He received the Harold B. Woodward Award from Arizona Public Health Association in 2013, the Andy Nichols Service Award from Arizona Public Health Association in 2008, the Newsmaker of the Year from the Arizona Republic in 2005, and in 2004 he received the Community Action Award from New Mexico Lung Association.



Mary Busch

Mary Busch is a licensed Dental Hygienist, and has practiced clinically for over 24 years. She has been an oral health educator all of her professional life, initially serving patients “chair-side” in clinical practice. Her career expanded to include education of dental professionals, caregivers, and intellectually disabled children and adults. For the past 8 years she has worked at the Arizona School of Dentistry & Oral Health in Mesa. Her current title is Associate Director of Community Partnership, which includes the following roles: dental student educator, community educator, and community engagement/coalition builder. She has always been passionate about helping individuals take control of their oral health, especially the oral health of young

children. She is mother of two adult/children, and grandmother to four, ages 5 and under. Interesting fact: None have ever had a cavity!



Les Caid

Chief Les Caid, started his career in 1979 with the Tucson Fire Department where he worked in all areas of the TFD including: Paramedic and EMS Supervisor, Battalion Chief of TRT, and HazMat. He retired as the Deputy Chief of Emergency Management. Les worked 4 years with R/M Fire leaving as the Regional Fire Chief of operations in Arizona and Oregon. In 2010, Chief Caid was hired by the Rio Rico Fire District, in Santa Cruz County, AZ. just 7 miles north of the U.S. Mexico Border. Les has a A.A. in Fire Science, B.S. in Public Administration and Master of Science Degree in Executive Leadership. After several years of prep-work by Chief Caid, in January 2014, RRFD started the first Community “Healthcare” Paramedic program in Arizona.



Daniel Derksen, MD

Daniel Derksen, MD is the Walter H. Pearce Endowed Chair, Professor and Director of the Center for Rural Health (CRH) and the Community, Environment & Policy Division at the University of Arizona’s Mel and Enid Zuckerman College of Public Health. As CRH Director, he oversees the State Office of Rural Health and the Rural Hospital Flexibility Program. He is a graduate of the UA College of Medicine, completed his residency at the University of New Mexico where he then worked on the faculty for 25 years, and is a board certified family physician. Dr. Derksen completed a Robert Wood Johnson Health Policy Fellowship in 2008 with U.S. Senator Jeff Bingaman (NM). He researched and drafted federal legislative provisions to improve the supply and distribution of the nation’s health

workforce that were included in Title V of the “Patient Protection and Affordable Health Care Act.” In 2011 Governor Susana Martinez appointed Dr. Derksen the Director, New Mexico Office of Health Care Reform where he submitted the state’s health insurance marketplace establishment proposal funded for \$34 million by the Centers for Medicare and Medicaid Services (CMS). Dr. Derksen serves on the Arizona Health Improvement Plan Advisory Committee to the Arizona Department of Health Services (ADHS). He chairs the American Academy of Family Physicians Commission on Governmental Advocacy. He also serves on the American Hospital Association’s Section on Rural or Small Hospitals Governing Council. His health services research interests include: expanding coverage for the uninsured, enhancing access to quality health care, reducing health disparities, and implementing coordinated, community- and team-based health services for rural, underserved and vulnerable communities and populations.



Donna Estabrook

Donna has over 23 years of healthcare experience both in a University healthcare setting and as an educator. She discovered early on in her career that she had a passion for continuous quality improvement, accreditation, public health issues and teaching. While working at Arizona State University Health Services (ASUHS), Donna had the opportunity to successfully lead ASUHS and three satellite facilities through two cycles of the Accreditation Association for Ambulatory Health Care (AAAHC) accreditation. She chaired the ASUHS Quality Improvement Committee for several years, helping each unit of the health services to develop indicators to measure the effectiveness of their processes.

She retired from ASU in 2012 and became a Program Director of a Health Information Technology (HIT) Program at a local online University where she prepared the HIT program for their accreditation with the Commission on Accreditation for Health Informatics and Information Management Education (CAHIIM). She recently joined the staff at the Arizona Department of Health Services to further develop the agency culture of continuous quality improvement while preparing for Public Health Accreditation Board (PHAB) Accreditation. Donna holds the RHIT (Registered Health Information Technology) credential with the American Health Information Management Association, a Bachelor's of Science degree in Communication and Master's degree in Applied Ethics in Leadership and Management from Arizona State University.



Kate Goodin

Kate Goodin is an epidemiologist with years of experience in applied public health at the local, state, and federal government levels. She has completed a Bachelor's degree in Microbiology, a Master's degree in Public Health with an emphasis on Epidemiology and Biostatistics, a certificate in Public Health Informatics, and is HITPro certified in Clinician/Practitioner Health Information Technology. She has served in a professional capacity as a subject matter expert on epidemiology, data systems, surveillance, system integration, and interoperability. Ms. Goodin also has extensive experience translating technical topics to lay audiences and training users on operations of public health data systems. She currently serves on the Mayo Health Equity Community Advisory Board, is

Arizona's Informatics Champion to NACCHO, was previously a member of the Florida Department of Health IRB, and is excited to be involved further in AZPHA.



Roberta Howard

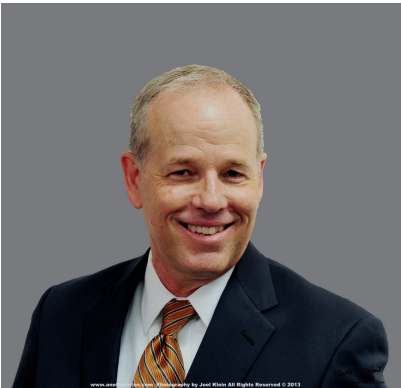
Roberta L. Howard, MA, LCS, BHP, Roberta is the CEO of NAZCARE, Inc. a consumer-operated, recovery and wellness organization. She has a great deal of research in the area of recovery support services, integrated wellness, learning styles and modalities which have contributed to successful curricula for NAZCARE and other agencies. NAZCARE is a leader in recovery support services, integrated wellness and has a nationally recognized training series. She is the Chair of the Partners of Native American Public Health, VP of AHIP, Designer of the Tribal Workforce and Recovery Model, and sits on many other Boards and Committees. Roberta has designed a best practice supportive housing curriculum for people with serious mental illness run by peers. Her evidenced

based programs in peer employment training and recovery support services are implemented in twenty-one states.



### Veda Kowalski

Veda Kowalski, Ph.D. is the Mental Health Outreach Manager at Interfaith Community Services where she provides educational outreach to faith communities on a variety of issues related to mental health including Mental Health First Aid. She assists individuals in navigating available mental and behavioral health resources in the community. Prior to that, Dr. Kowalski provided leadership in behavioral and conflict management within Higher Education institutions spending most of her career managing crisis situations, risk assessment and mediation.



### Michale Lacey

Michael Lacey is the Director of the Arizona Department of Water Resources. Prior to this position, he served as Deputy Director of the Department. Before joining the Department, he practiced as a consulting Hydrologist in Arizona for over 22 years. His practice focused on hydrology, water rights, groundwater recharge, and wastewater reuse. Mr. Lacey practiced at the intersection of science, technology, law, and public policy. He was an active participant in efforts to reform the Department and to refine and streamline its regulatory programs, including the Recharge and Assured and Adequate Water Supply Programs.

Mr. Lacey serves as the Department's representative to the Water Infrastructure Finance Authority and the Arizona Power Plant and Transmission Line Siting Committee. He is a member of the External Advisory Committee of the Arizona State University School of Sustainability, Decision Center for a Desert City and the University of Arizona Water Resources Research Center. Mr. Lacey serves as the Department's administrative and technical lead on energy issues. He also serves as the Chair of the Technical Advisory Committee to the Joint Legislative Study Committee on Water Salinity Issues and Co-Chair of the Environment and Water Committee of the Arizona Mexico Commission.

Prior to entering private practice, he had tenures with ADWR's Adjudications Division and the USDA Forest Service, Rocky Mountain Forest and Range Experiment Station, Tempe, AZ. He has Bachelors and Masters Degrees in Physical Geography from the University of Delaware and Arizona State University, respectively.



### David K. Leard

David has over 30 years experience in health care management in various settings from both the public and private sectors. David's career experience includes contract geriatric rehabilitation services as CFO, Health Management Organization as Director of Operations, and public health with the Northern Arizona Council of Governments (NACOG) Head Start as the Health & Nutrition Services Manager. In March 2014, David joined Around The Mountain Pediatric Dentistry as the Practice Administrator where he is responsible for the operational management of the multi provider/multi location practice. During his time with NACOG Head Start, David was

instrumental in the development and implementation of teledentistry programs in Northern Arizona. David has presented locally, regionally and nationally on the benefits and use of teledentistry.





Karen MacDonald

Karen was ordained as a minister in 1987 and has served churches and their communities in Ohio and Tucson, AZ. She joined Interfaith Community Services in 2006, now serving as the Health Ministry Manager, overseeing ICS's work to support diverse congregations in building their own integrative health ministries. Such programs in congregations address the spiritual, physical, mental, and social health of members and the community. Her work includes providing educational forums and materials to help faith communities address the end-of-life journey in a faith perspective. She also serves as Director for Spiritual Leadership on the board of the Health Ministries Association, a national organization for those working for healthier communities through

congregations.



Phillip Stevenson, Ph.D.

Phillip Stevenson, Ph.D. is the Director of the Arizona Statistical Analysis Center (SAC) at the Arizona Criminal Justice Commission. The SAC serves as the research arm of the Arizona Criminal Justice Commission and contributes to statewide policy development by providing statistical research and analyses of the criminal justice system in Arizona. In addition to his work as director of the SAC, Phillip is a member and past chair of the Arizona Substance Abuse Partnership Epidemiology Work Group, is a member of the Advisory Board for the Center for Violence Prevention and Community Safety

at Arizona State University, and serves as Co-Chair of Arizona's National Instant Criminal Background Check System Task Force. He also serves as Vice Chair of the Global Justice Information Sharing Initiative Strategic Solutions Working Group and as a member of the Global Standards Council, which are subcommittees of the U. S. Attorney General's Federal Advisory Committee on justice information sharing and integration initiatives. Phillip is also the immediate past President of the Justice Research and Statistics Association and serves on the board of directors of SEARCH, the National Consortium for Justice Information and Statistics. Since moving to Arizona in 2006, Phillip has been recognized by Governors Napolitano and Brewer for his work on substance abuse issues in Arizona and by the United States Attorney's Office, District of Arizona for his work on a statewide reentry initiative. Phillip received his bachelor's and master's degree in sociology from the University of Arizona and his PhD in sociology from Loyola University Chicago.



Sheila Sjolander

Sheila Sjolander has been with the Arizona Department of Health Services for over 13 years and has served as the agency's Assistant Director since 2011. Sheila leads the Division of Public Health Prevention Services, overseeing a budget of more than \$200 million and over 50 public health programs. The division includes programs such as injury prevention, nutrition & physical activity, teen pregnancy prevention, chronic disease, primary care workforce programs, tobacco prevention & cessation, WIC, oral health, and maternal & child health. Sheila leads initiatives to integrate prevention programs and state health improvement planning processes. She formerly served as a Strategic Planner for the Wisconsin Department of Health Services, and in Oregon

worked in job training and workforce development. Sheila received her Master of Social Work degree in policy and planning from Temple University in Philadelphia.



Stanley Szpytek

Mr. Stanley J. Szpytek, Jr. is a nationally known fire and life safety / disaster preparedness consultant with more than 30 years of experience as an emergency responder, public official, local code enforcement officer and private consultant serving clients in all occupancy types with special focus on multi-unit residential housing properties, healthcare and educational institutions. Mr. Szpytek has extensive experience in the strategic planning and delivery of a wide variety of emergency services to a metropolitan community as well as the development and implementation of proactive programs designed to reduce the risk of fire and other adverse events. As a private consultant, Mr. Szpytek provides the unique perspective of a seasoned fire marshal to assist clients with life safety code compliance and the development of disaster planning / emergency management programs to help an occupancy plan, prepare, mitigate, respond and recover from a disaster or other critical incident.



Pamela Thompson

Dr. Pam Thompson completed her Doctor of Medicine (MD) and residency training in Family Medicine at the University of Alberta in 2004. She completed an additional training program in Emergency Medicine at the University of Calgary in 2005. Dr. Thompson has worked as a Family Physician since 2005 in both rural areas and urban centers. Dr. Thompson has strong interests in the areas of homelessness, immigrant health, justice, addiction & mental health. She has experience working as a member of interdisciplinary health teams that specialize in treating individuals facing multiple barriers to health care. Since she began practicing medicine, Dr. Thompson has taken an interest in providing care to underserved populations and has been an active member of organizations and committees that were solution-focused with the community in mind. She was the Co-Chair of the Prevention Sub-Committee for the Committee to End Homeless in Calgary; the Director of a highly innovative housing and health start up program in Calgary; and was appointed as a Member of the Board for the Alberta Secretariat for Action on Homelessness which developed a 10 Year Plan to End Homelessness for the province. She has recently been appointed to the St. Luke’s Health Initiatives Board of Trustees.

Dr. Thompson has provided consulting services to the Government of Alberta where she developed a provincial model to integrate services for individuals with complex needs involved in the Criminal Justice System. In 2010, Dr. Thompson received an Award of Exceptional Recognition from the Calgary Police Service in acknowledgment of establishing the Pathways Diversion Court Process. In 2011, as a member of the Alberta Secretariat, the group received the Premier’s Award of Excellence for the first year implementation of the Provincial 10 Year Plan to End Homelessness. Currently, Dr. Thompson works as a Clinical Assistant Professor at Arizona State University in the College of Health Solutions.



Carol Vack

Carol Vack has been with the Arizona Department of Health Services (ADHS) for over 3 decades and has served as the Director’s Local Health Liaison since 2004. Carol works closely with Arizona’s County Health Officers and ADHS leadership to continuously improve relations and public health programs/ initiatives in Arizona. Carol manages the Preventive Health and Health Services Block Grant, which, the last couple years has had a focus primarily on Public Health Accreditation readiness in County Health Departments. She provides consultation and technical assistance to counties as they work toward meeting the Public Health Accreditation standards. In addition Carol serves as a public information officer for ADHS. She received her Bachelor of Science in Community Health Services from Arizona State University.

# Conference Agenda

7:00AM – 8:00AM	<b>Registration &amp; Breakfast</b> Posters and Exhibits available for review
8:05AM – 8:15AM	<b>Welcome &amp; Opening Remarks</b> Daniella Yaloz, AzPHA Executive Director
8:15AM – 9:15AM	<b>Plenary Session Speaker</b> <b>Cheryl Bartlett, RN, BA</b> <i>Community Engagement &amp; Partnerships for Public Health: The Massachusetts Experience</i>
9:20AM – 9:30AM	<b>Break</b> Posters and Exhibits available for review
9:30AM – 11:05AM	<b>Morning Concurrent Sessions</b> See page 12 for more details
11:05AM – 11:20AM	<b>Lunch is Served</b>
11:25AM – 12:30PM	<b>Working Lunch</b> Lunch & Annual Meeting
12:30PM – 1:20PM	<b>Plenary Session Speaker</b> Dr. Pam Thompson, MD, BA <i>Building Healthy Communities Through Innovative Partnerships</i>
1:20PM – 1:30PM	<b>Break</b> Posters and Exhibits available for review
1:35PM – 3:10PM	<b>Afternoon Concurrent Sessions</b> See page 12 for more details
3:15PM – 4:15PM	<b>Plenary Session Speaker</b> <b>Dr. Dan Derksen, MD</b> <i>ACA and Collaboration</i>

# AzPHA Meeting Agenda

<b>Welcome Remarks</b> .....	<b>Patti Taylor</b> <i>Recognition of Lifetime Members</i> <i>Recognition of New Members</i>
<b>Approval of 2013 Business Meeting Minutes</b> .....	<b>Ed Jones</b>
<b>Reports</b>	
<i>Legislative Update</i> .....	<b>Nicole Olmstead</b>
<i>Treasurer's Report</i> .....	<b>Debbie Abraham</b>
<i>Executive Director Report</i> .....	<b>Daniella Yaloz</b>
<i>Revisions to Bylaws</i> .....	<b>Ed Jones</b>
<i>President's Report</i> .....	<b>Patti Taylor</b>
<b>Old Business</b>	
<b>New Business</b>	
<i>Election Results</i> .....	<b>Patti Taylor</b>
<b>Passing of the Gavel – Incoming President's Remarks</b> .....	<b>Tracy Lenartz</b>

# Morning & Afternoon Concurrent Sessions

## Morning Concurrent Sessions for Session 1: 9:35am-10:20am & Session 2: 10:20am-11:05am

### Track 1: Collaboration in Rural Health

Session 1: Lina Austin, BA, Future Forward Foundation Executive Director  
“Seed the Future”

Session 2: David Leard, Around the Mountain Dentistry – Teledentistry  
“Teledentistry - Why isn't Everyone Doing It?”

### Track 2: Collaboration in Arizona Current Events

Session 1 & 2 Combined: Sheila Sjolander, MSW & Carol Vack, BS, AZ Dept. of Health Services  
“The Path to Public Health Accreditation: From Assessment to Action”

### Track 3: Collaboration in Healthy Communities for Life

Session 1: Mary Busch, RDH, BS, AT Still – Oral Health  
“Oral Health - Breaking Through Barriers”

Session 2: Karen MacDonald, M.Div & Veda Kowalski, PhD  
“Faith Based Collaborations for Community Health”

## Afternoon Concurrent Sessions for Session 3: 1:35PM – 2:20PM & Session 4: 2:25pm-3:10pm

### Track 1: Collaboration in Rural Health

Session 3: Chief Les Caid, PhD Rio Rico Fire Department  
“Community Integrated Paramedicine: A Paradigm Shift for the Fire Service”

Session 4: Stan Szpytek, NIMS, Arizona Health Care Association  
“‘Disaster Ready...or Not’ Long-Term Care’s Experience with Enhancing Emergency Preparedness Capabilities in Partnership with ADHS”

### Track 2: Collaboration in Arizona Current Events

Session 3: Roberta Howard, NAZCARE Prescott  
“Behavioral Health/Physical Health Integration”

Session 4: Phillip Stevenson, PhD – Arizona Criminal Justice Commission Statistical Analysis Center  
“The Arizona Prescription Drug Misuse and Abuse Reduction Initiative”

### Track 3: Collaboration in Healthy Communities for Life

Session 3: Al Brown, BS, MPA, RS & Kate Goodin, MPH, Maricopa County Air Pollution  
“Life Beside the Fast Lane: Freeways and Other Environmental Health Hazards of the Coffelt Neighborhood, Phoenix, AZ”

Session 4: Michael Lacey, ADWR  
“Arizona's Strategic Vision for Water Supply Sustainability”

# STUDENT POSTER PRESENTERS

*Steven Hadeed, MPH - Obesity & Trauma Mortality: Sizing Up the Risks in Vehicle Crashes*

*Ashley Bird, BS - Pre-Hospital Opioid Administration in Patients living in Arizona with Documented Severe Pain*

## 90% OF A CHILD'S BRAIN DEVELOPS BY AGE 5.

PEDIATRICIAN  
Dr. Lyndy Jones



### It takes an organization to raise a village.

CPSA manages the delivery of high-quality health care treatment for more than 50,000 people a year. Men, women, children and entire families living with mental health and substance use disorder challenges benefit from the support we provide. Since 1995 we've been the silent helper right here in Pima County.

Helping those who help. It's what we do.



**COMMUNITY PARTNERSHIP**  
of Southern Arizona

**ADMINISTRATION:** 520-325-4268  
**COMMUNITY-WIDE CRISIS LINE:**  
520-622-6000 or 800-796-6762  
[cpsaArizona.org](http://cpsaArizona.org)

CPSA receives funding from the Arizona Department of Health Services/Division of Behavioral Health Services (ADHS/DBHS), Arizona Health Care Cost Containment System (AHCCCS), and Substance Abuse and Mental Health Services Administration (SAMHSA).



**FIRST THINGS FIRST**

[FirstThingsFirstAZ.gov](http://FirstThingsFirstAZ.gov)



*This event has been approved for 5.75 Continuing Education Units by the California Board of Registered Nursing.*

*This event has been approved for 5.75 CHES Continuing Education Units by AzPHA.*

*This event has been approved for 7.0 Social Work Continuing Education Units by AZ Chapter of NASW.*

**Looking for Continuing Education?**



Instructions for participants to obtain certificates documenting Continuing Education and or certificates of completion:

**Go to: [www.gvahec.org](http://www.gvahec.org) > Request your CE Certificate**

Find your event and click on the link which will take participants to a brief survey about the event. After completing the survey, participants will be sent a personalized certificate via email, (**NOTE:** This is not an automated process and will not happen immediately, please allow 10 business days)

Should you have any questions about your certificate or this process, please contact **Afi Carter** at **480-288-8260 ext. 100** or **[acarter@gvahec.org](mailto:acarter@gvahec.org)**

**Board Members**

**Executive Committee**

Patti Taylor	President
Tracy Lenartz	President Elect
Elizabeth Kizer	Vice President
Ed Jones	Secretary
Debbie Abraham	Treasurer
Pat VanMaanen	Immediate Past President

**Board of Directors**

Barbara Herber	Affiliate Rep to Governing Council
Lauren McCollough	Student Representative
Jana Lynn Granillo	Marketing & Public Relations
Nicole Olmstead	Public Health Policy
Jamie Tankersly	Public Representative 1
Thomas Winkel	Public Representative 2
Rebecca Drummond	Director at Large 1
Rebecca Nevedale	Director at Large 2
Joshua Beck	Director at Large 3

**Are you in over your head?**

**IF YOU HAVE A GAMBLING PROBLEM, WE'LL THROW YOU A LIFELINE.**

ARIZONA OFFICE OF **PROBLEM GAMBLING**

Resources include:

- Treatment
- Self-exclusion from casinos
- Gamblers Anonymous

Call **1-800-NEXT-STEP (639-8783)** or visit **[www.problemgambling.az.gov](http://www.problemgambling.az.gov)**

# Award Winners

<b>Harold B. Woodward Award</b>		<b>Lloyd E Burton Scholarship</b>		<b>Senator Andy Nichols Honor Award</b>	
1978	Ruth Woodward	1976	Bonito Carderelli	1959	Annie Wauneka
1979	Arthur Mello	1977	George Comerci, Jr.	1964	George Marx
1980	Betty Bachmann	1981	Katherine Mishler	1965	Margaret Maleady
1981	Shirley Wutz	1982	Kianna Kleerup	1966	S. F. Farnsworth
1982	Francine Martin	1983	Jamie Benedict	1967	Joseph Weinstein
1983	Pat Zurick	1984	Eleanor Suida	1968	Elaine McFarland Neils Paulsen
1985	Colleen Goltz	1985	Danice Jackson	1969	Pearl Tang
1986	Jane Canby	1986	Juan Molina	1970	Mary Caldwell
1987	Larry Groth	1987	Irma Bustamonte	1971	Frederick Brady
1988	Patricia Nolan	1989	Mark Mouritsen	1972	Iva Harlin
1989	Michael Nolin	1990	Elena Kirschner	1974	Raymond Kaufman
1991	Barbara Olson	1991	Orina Mann	1975	Mary Copeland
1992	Jim Lemmon	1992	Taimi Kuiva	1976	Melvin Goodwin
1993	Gordon Jensen	1993	Christy Graham	1977	Leroy Kochert
1994	Barbara Olson Bonnie Barclay	1994	Alise Willard	1978	Betty R. Ord
1995	Elsie Eyer	1995	Kristin Wenrstrom	1979	Bailey Batiste
1996	A.J. Battistone	1997	Lisa de la Trinidad	1980	Herbert Abrams
1998	Nancy Michaels	1998	Justin Moon	1981	Lois Anne Crist
2000	Margaret Simmons	1999	Debbie Escamillo	1982	Hazel Bennett
2001	Andy Nichols (Posthumously)	2000	Roopali Harshad Desai	1983	B. Harness
2002	Barbara Burkholder	2001	Heather Hiscox	1984	Bernice Epstein
2003	David Dube	2002	Christine Estrada	1986	Margaret Welch
2004	Paul Newberry	2003	Olufunke Ajayi	1987	Representative Cindy Resnick
2005	Nancy Thomann	2004	Candice Clifford	1988	Charles Teegarden
2007	Sandra G. Halldorson	2005	Mary Clouser	1989	Representative Bart Baker David Herman
2008	Christine Liberato	2006	Laurel Jacobs	1990	Patricia Moore
2009	Phyllis Krause Primas	2007	Julianna P. Evans	1991	Phil Lopes
2010	Jack Beveridge	2008	Erin Suelmann	1992	Sarah Kramer
2011	Jana Lynn Granillo	2009	Sandra Chmelnik	1993	Wadie W. Kamel
2012	Ellen Owens	2010	Thomasina Blackwater	1994	Jane Pearson
2013	Al Brown	2011	Tara Stiller	1995	Jack Dillenberg, DDS
2014	<b>Chris Mahon</b>	2012	Robin DeWesse	1996	Jane Canby
		2013	Moira Alexander	1997	Sally Lewis
		2014	<b>Aimee Snyder</b>	1998	Robert Alfrich
				1999	Jane Lange
				2001	Leland Fairbanks
				2002	Jonathan B. Weisbuch, MD, MPH
				2003	Carol Kamin
				2004	Kevin Dresen, PhD
				2005	Tim Flood, MD
				2006	Charlotte Harrison
				2007	Patricia VanMaanen, RN, MS
				2008	Albert Brown, MPA
				2009	Kathy Byrne
				2010	Joel Meister, PhD
				2011	Dean Brennan
				2012	Roger Hughes
				2013	Pete Wertheim
				2014	<b>Will Humble</b>

# Award Winners

## Commitment to Underserved People (CUP) Award

- 2005 – The Mobile Health Program at the University of Arizona Mel & Enid Zuckerman College of Public Health
- 2006 – Susan Kunz, for her healthcare work with migrant workers – Tucson, AZ
- 2007 – Gail Brown & Jo Barone – St. Joseph’s Hospital (Phoenix) for work with low-income and underserved breast cancer patients
- 2008 – Phillip Mooseberry, DDS, St. Elizabeth’s Health Center
- 2008 – Catherine Amiot, Mission of Mercy-Arizona for her dedication to those who faced barriers to access services
- 2009 – Marge Ebeling – In recognition of dedication and sustained effort in assuring the delivery of health services to underserved population in Arizona.
- 2010 – Jonathan Lee-Melk MD FAAP – In recognition of his vision, tireless efforts and commitment to pediatric care in Arizona.
- 2011 – Michelle Gross-Panico- Catholic Healthcare West- Chandler Regional Medical Center- In recognition for her work to increase dental care in Arizona and to be the first dental hygienist to establish a school based on Affiliated Practice Dental Clinic
- 2012 – Virginia Ward- Southwest Human Development- in recognition of the desire to serve at-risk and underserved children and families
- 2013 – ASU Southwest Interdisciplinary Research Center (SIRC)- in recognition of development of a culturally grounded and transdisciplinary approach to health interventions
- 2014 – David Dube – Maricopa County Department of Public Health**

## Cele Cohen Award

- 1975 Clara Daley
- 1976 Ruth Brubaker / Aurelia Moser
- 1978 Jean McCollum / Marion Rosen
- 1979 Bea Steffl
- 1980 Imogene Eide
- 1981 Carol Lockhart
- 1982 Joan Douglas
- 1983 Betty Spaulding
- 1984 Mary Coleman
- 1985 Kay Cole
- 1986 Georgia Macdonough
- 1987 Susan Fifer
- 1988 Aileen McMinn
- 1989 Sister M. Rheinlander
- 1990 Pat Moore – Urban Beverly Warne – Rural
- 1991 Lo Ann Bell - Urban Maxine McKee – Rural
- 1992 Betty Finch – Urban Sally Lewis – Rural
- 1993 Kathleen Ford and Karen Liberante – Urban
- 1995 Christena Fox – Urban
- 1996 Elizabeth Siwarski – Urban
- 1997 Kathy Malkin – Urban  
Billie Brown – Rural
- 1998 Jill Littrell – Urban  
Cathy Burke – Rural
- 1999 Janice Nusbaum – Urban  
Dorene McElyea – Rural
- 2000 Marilyn Neibergall – Urban  
Joyce Hubbard – Rural
- 2001 Johanna Kramer – Urban  
Marilyn Atha – Non-member
- 2002 Barbara Maack – Urban  
Martha King – Rural  
Rossana Radspinner – Non-member
- 2003 Barbara Herber – Public Health Nursing  
Judy Doan – Non-member
- 2004 Mary Webb
- 2005 Christine Bronston
- 2008 Robert and Maureen Kappler
- 2009 Delores Patterson
- 2010 Joyce Goeller
- 2011 Barbara LaBranche
- 2013 Ramona Rusinak
- 2014 Kathi Ford**



# Award Winners

## 2014 Health Education Media Making Yearly (Hemmy) Award

1st Place

Student Campaign

**Engineering Addiction**

*Benjamin Palmer*

1st Place

Grassroots Campaign

**World No Tobacco Day Community Fair**

*Julie Scholer Jo Ann Brown*

*Denise Mike Deni Gaines*

*Frieda Pollack Keith Walker*

*Charles Carpenter Laurie Thomas*

*Phillip Carpenter Mark Gallegos*

*Marcus Johnson Vincent Lopez*

*11 youth from Trevor G. Browne High School.*

1st Place

Professional Campaign

**A Safe Ride Home**

*Chris J. Minnick Yomaira Diaz*

*Laura Bellucci Tomi St. Mars*

*Laura Oxley Sheila Sjolander*

*Rural/Metro Fire*

1st Place

Professional Other

**Arizona Retailer Tobacco Training**

*Erika Mansur Mark Baer*

*Frieda Pollack Mark Gallegos*

*Laurie Thomas Mary Ann Brown*

# A Special Thanks To:

## Fall Conference Planning Committee

Al Brown	Director, Environmental Research Initiatives and Lecturer (former Maricopa Env Health Director)	Arizona State University
Brook Dorff	MA, CHES, PhD Student of Global Health	Arizona State University
Carol Vack	Local Health Liaison	ADHS
Christine Stein	PhD, MPH, Senior Program Specialist	AZ First Things First
Debbie Padilla	Division Manager, PH Prevention	Apache County PH Services District
Dr David James Harden	Strategic Planning Section Chief	ADHS
Elizabeth Kizer	AzPHA Vice Pres, DrPH student, Community Engagement Coordinator	Center for Rural Health @ UA
Jabiz Behzadpour	medical student	Midwestern University
Jendean Sartain		(Former) Gila County PH Dept
Joshua Beck	PHEP Director	Gila County Public Health
Karen Sell	Chief, Bureau of Nutrition and Physical Activity	ADHS
Kate Goodin	Epi and Data Services Program Manager	Maricopa Dept of Public Health
LeAnne Prenovost	RN, MSN, MBA, MHA	
Mary Alba Kurth	COPD Collaborative Program Director	American Lung Association
Patti Taylor	AZPHA President, Director GVAHEC	GVAHEC, AzPHA
Susan Kasle	Program Director	Interfaith Community Service
Terri Varason	MS, RD, Director of Nutrition Education	Dairy Council of Arizona
Warren B Stern	President	Employee Health Management Systems
Jana Lynn Granillo	AzPHA marketing committee	AzPHA
Beth Birmingham	Program Assistant	AzPHA
Rebecca Ruiz	Senior Program Coordinator	Center for Rural Health @ UA
Tracy Lenartz	President Elect AzPHA	AzPHA
Daniella Yaloz	Executive Director, AzPHA	AzPHA

## Awards Selection Committee

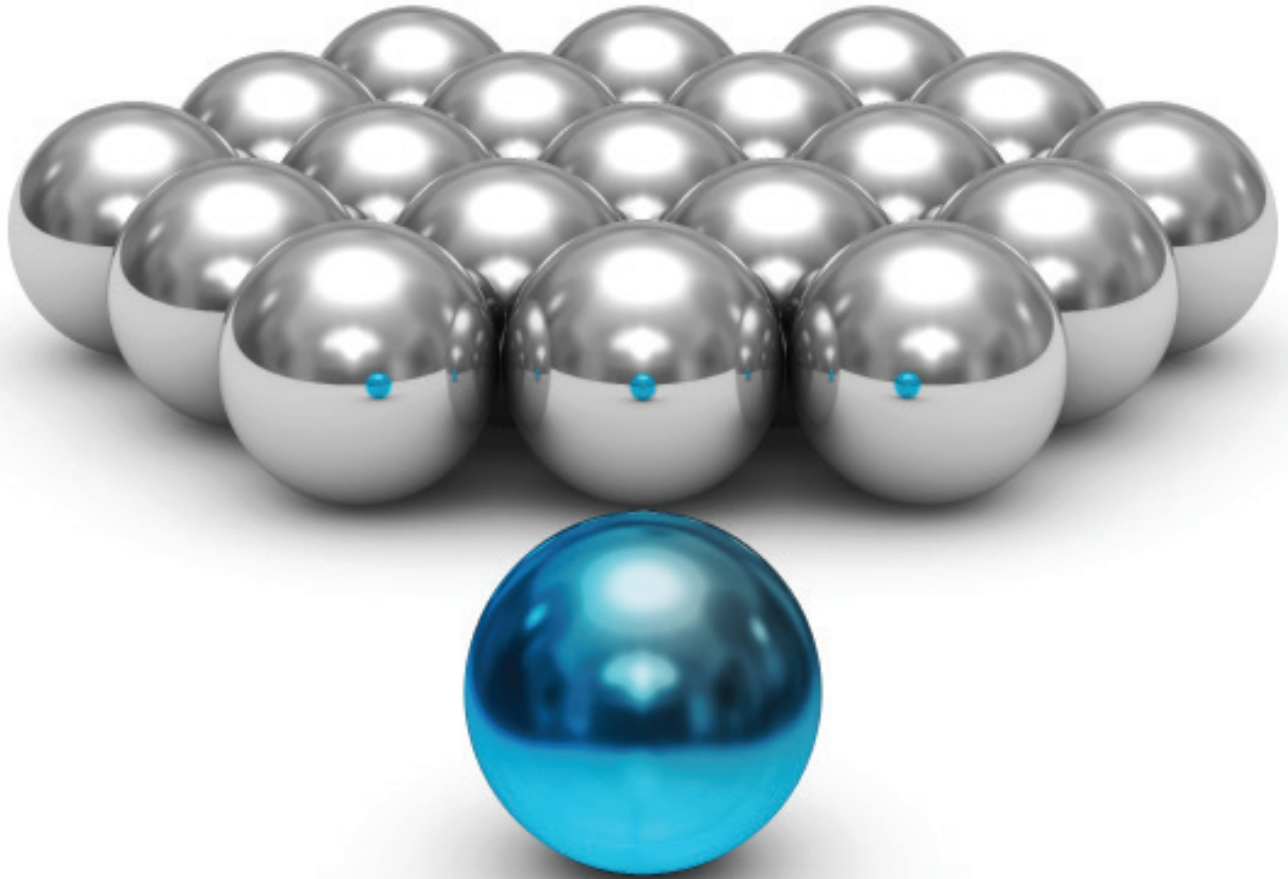
Felicia Trembath  
Shadman Ahmad  
Dee Fleming  
Joshua Beck

## Continuing Education Credits

Greater Valley Health Education Center

## Conference Attendees

Amanda	Aguirre	<i>Regional Center for Border Health</i>	Reva	Litt	<i>Empowerment Systems, Inc.</i>
Angelina	Alfaro	<i>Empowerment Systems, Inc.</i>	Karen	MacDonald	
Robert	Alfich	<i>MPH Student at University of West Florida</i>	Christine	Mahon	
			Teresa	Manygoats	<i>ADHS</i>
			Mark	Martz	<i>ADHS</i>
MariaJose	Almazan		Lauren	McCullough	<i>University of Arizona</i>
Lina	Austin	<i>Future Forward Foundation, Inc.</i>	Martha	McNair	<i>Empowerment Systems, Inc.</i>
			Tuly	Medina	
Alan	Bailey	<i>Pfizer</i>	Mary	Mezey	<i>MCDPH</i>
Leila	Barraza	<i>University of Arizona</i>	Melanie	Mitros, PhD	
Cheryl	Bartlett		Ahmed	Mohamed	<i>MCDPH</i>
Rene	Bartos	<i>Mercy Care Plan</i>	Javier	Morales	
Joshua	Beck	<i>Gila County</i>	CHRISTINE	MORGAN	<i>AT STILL UNIVERSITY</i>
Susan	Benedetti	<i>Bridgeway Health Solutions</i>	Janet	Mullen	<i>ADHS</i>
Kim	Bentley	<i>Central Arizona College</i>	Marie	Nelson	
Ashley	Bird	<i>University of Arizona</i>	Nicole	Olmstead	<i>American Heart Association - Arizona</i>
Elizabeth	Birmingham	<i>Arizona Public Health Association</i>			
			Ines	Pampara	
Sally	Bordeaux	<i>MCDPH</i>	Jessica	Parks	<i>NAU</i>
Al	Brown		Karen	Peifer	<i>First Things First</i>
Jenna	Burke	<i>Empowerment Systems, Inc.</i>	Nathan	Peterson	<i>Yavapai County Community Health Services</i>
Mary	Busch	<i>A.T. Still University</i>			
Les	Caid		Frieda	Pollack	<i>MCDPH</i>
Charles	Carpenter	<i>MCDPH</i>	Phyllis	Primas	<i>Arizona State University</i>
Chara	Chamie	<i>Mayo Clinic</i>	Ramona	Rusinak	
Hong	Chartrand	<i>ADHS</i>	Tomas	Ryan	
Katherine	Clevenger-Burdell		Jendean	Sartain	
			Ingrid	Sawyer	<i>Empowerment Systems, Inc.</i>
Lee	Connelly	<i>MCDPH</i>	Lisa	Schamus	<i>Arizona Family Health Partnership</i>
Tracy	Cruikshank	<i>MCDPH</i>			
			Natalie	Schmertmann	<i>PVCC</i>
Devin	Dale	<i>Southwest Human Development</i>	Julie	Scholer	<i>MCDPH</i>
			Karen	Sell	<i>ADHS</i>
Eveline	Denious		Meena	Shahi	<i>First Things First</i>
David	Dube	<i>MCDPH</i>	Sheryl	Shantz	
Marty	Eckrem	<i>Coconino County</i>	Sheila	Sjolander	<i>ADHS</i>
Donna	Estabrook	<i>ADHS</i>	Greg	Smith	
			Kenneth	Steel	<i>MCDPH</i>
Mark	Gallegos	<i>MCDPH</i>	Christine	Stein	<i>FTF</i>
Mary	Gomez	<i>Cochise County</i>	Warren	Stern	<i>Employee Health Management Systems</i>
Kate	Goodin	<i>MCDPH</i>			
Jennifer	Gordon	<i>Roosevelt School District</i>	Phil	Stevenson	
Steven	Hadeed	<i>The University of Arizona</i>	Stan	Szpytek	
Dr. David	Harden	<i>ADHS</i>	Lubna	Tabassum	<i>AZ dept of Health services</i>
Sherry	Haskins	<i>ADHS</i>	Patti	Taylor	<i>Empowerment Systems, Inc.</i>
Barbara	Herber		Laurie	Thomas	<i>MCDPH</i>
Fatima	Hernandez	<i>MCDPH</i>	Pamela	Thompson	
Leslie	Horton	<i>Yavapai County Community Health Services</i>	Felicia	Trembath	<i>MCDPH</i>
			Stephen	Tullos	<i>Yavapai County Community Health Services</i>
Roberta	Howard				
Will	Humble	<i>ADHS</i>	Adrienne	Udarbe	<i>Pinnacle Prevention</i>
Dara	James	<i>Arizona State University</i>	Cassie	Uribe	<i>Pasadera Behavioral Health Network</i>
Gordon	Jensen				
Edward	Jones	<i>Empowerment Systems, Inc.</i>	Carol	Vack	<i>Arizona Department of Health</i>
Susan	Kasle	<i>Interfaith Community Services</i>	Alex	Valenzuela	
Abel	Kebede		Pat	VanMaanen	<i>PV Health Solutions</i>
Cassandra	Kettenhoven	<i>Empowerment Systems, Inc.</i>	Le'erin	Voss	
Veda	Kowalski		Holly	Weber	
Michael	Lacy		Kim	Weidenaar	<i>Sandra Day O'Connor College of Law, ASU</i>
David	Leard				
Theresa	LeGros	<i>University of Arizona</i>	Daniella	Yaloz	<i>Arizona Public Health Association</i>
Deanna	Lewis	<i>University of Arizona</i>			



Advance to the forefront of your profession.

### ATSU's College of Graduate Health Studies

Position yourself to help lead with:

- Doctor of Health Sciences**
- Doctor of Health Education**
- Doctor of Health Administration**
- Master of Health Administration**
- Master of Public Health**
- Master of Public Health-Dental**
- Master of Science in Kinesiology**

Step up to superior professional opportunity. Taught by our exceptional faculty of academic and industry leaders, the 100 percent online degrees offered at ATSU's College of Graduate Health Studies are as flexible as they are progressive. All while allowing you access to the exceptional resources and reputation of this leading health sciences university.

Learn more about how you can advance your professional performance at:  
[www.atsu.edu/CGHS](http://www.atsu.edu/CGHS)

FIRST IN WHOLE  
PERSON HEALTHCARE



A.T. STILL UNIVERSITY | **ATSU**  
COLLEGE OF GRADUATE HEALTH STUDIES

Phone: 877.469.2878 | Email: [onlineinquiry@atsu.edu](mailto:onlineinquiry@atsu.edu) | [www.atsu.edu/CGHS](http://www.atsu.edu/CGHS)